

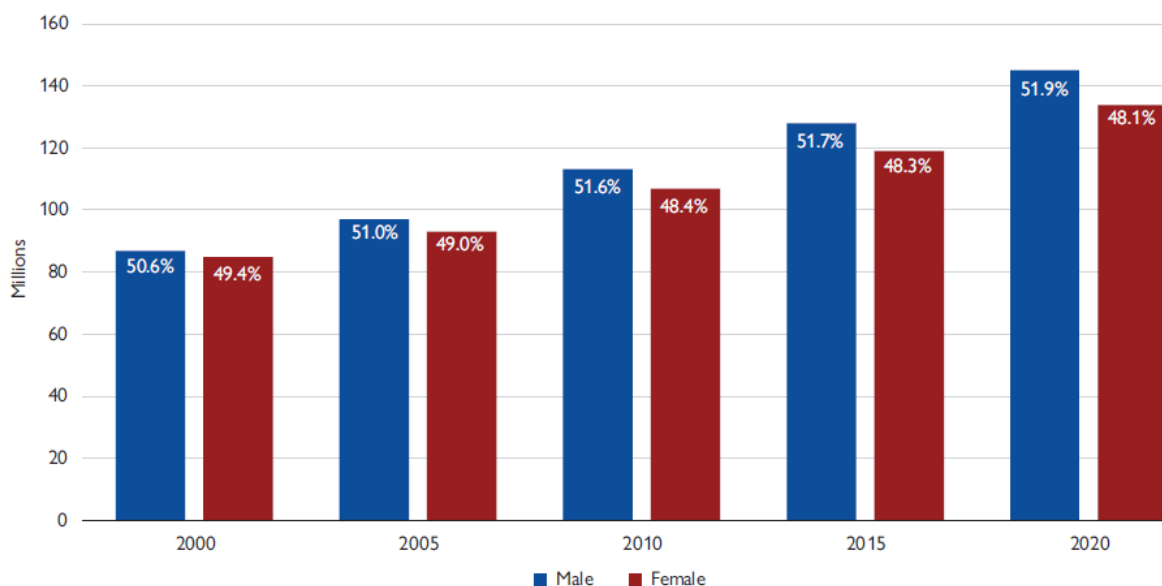


WORLD MIGRATION REPORT DATA SNAPSHOT

Feminization of migration—or not?

As the saying goes “a picture can be worth a thousand words”, so these data snapshots have been provided to help explain changes in migration through innovative data analysis. The “thousand words” can be found in the report itself—clicks on the link below.

Figure 2. International migrants, by sex



Source: UN DESA, 2021a.

This Data Snapshot shows that while the number of female international migrants has increased since 2000, the rate of growth of female migrants is much lower than that of male migrants. In 2000, female international migrants were 49.4% of all international migrants; in 2020, the female share had declined to 48.1%.

The latest data on international migrant workers shows us that labour migration is more gendered. In 2019, female migrant workers made up 41.5% of all international migrant workers; 58.5% were male.

Read more about this data output in Chapter 2 (Global Overview) of the World Migration Report 2024. The full report can be accessed [here](#). The interactive data visualization platform is [here](#).

This WORLD MIGRATION REPORT DATA SNAPSHOT has been produced by [IOM Research](mailto:research@iom.int) (research@iom.int). *Important disclaimer:* The opinions expressed in this document are those of the authors and do not necessarily reflect the views of IOM. The inclusion or presentation of material does not imply the expression of any opinion whatsoever on the part of IOM, or of any of its members or partners.