



WORLD MIGRATION
REPORT 2024

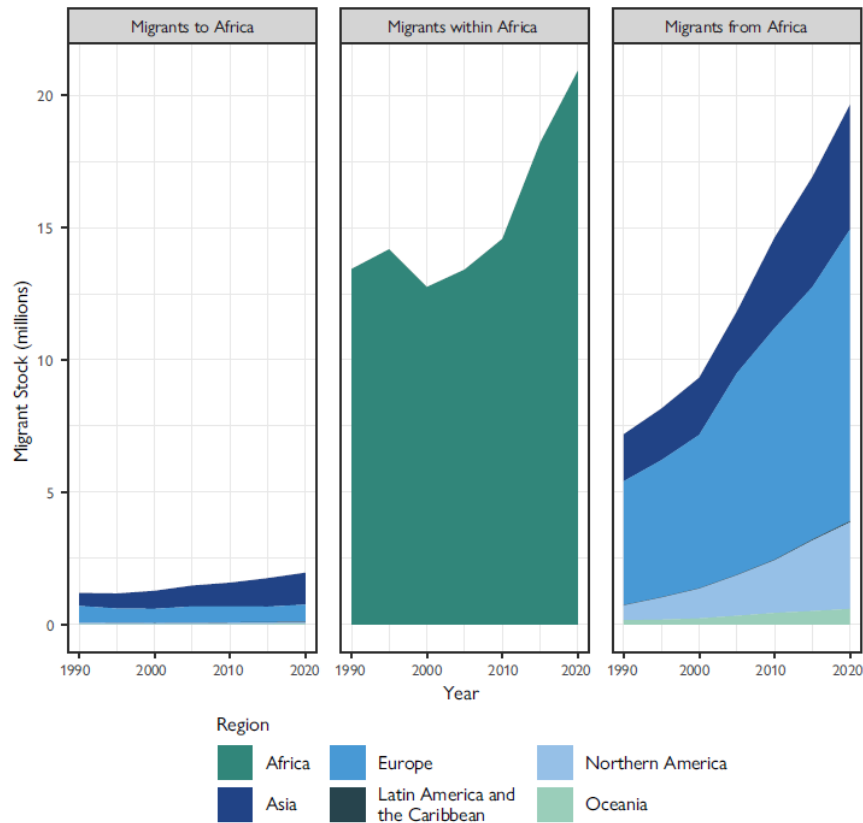


WORLD MIGRATION REPORT DATA SNAPSHOT

Long-term regional migration trends

As the saying goes “a picture can be worth a thousand words”, so these data snapshots have been provided to help explain changes in migration through innovative data analysis. The “thousand words” can be found in the report itself—clicks on the link below.

Figure 1. Migrants to, within and from Africa, 1990–2020



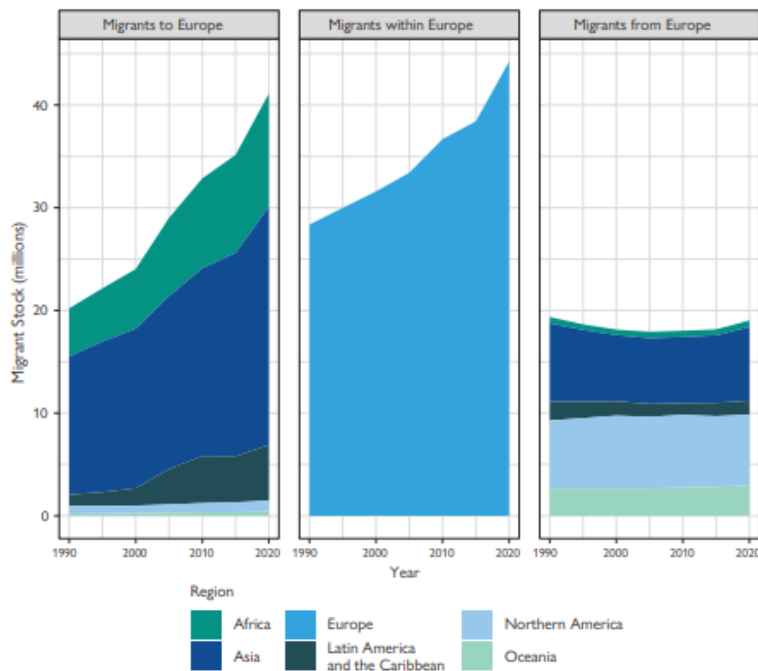
Source: UN DESA, 2021.

Note: “Migrants to Africa” refers to migrants residing in the region (i.e. Africa) who were born in one of the other regions (e.g. Europe or Asia). “Migrants within Africa” refers to migrants born in the region (i.e. Africa) and residing outside their country of birth, but still within the African region. “Migrants from Africa” refers to people born in Africa who were residing outside the region (e.g. in Europe or Northern America).

This Data Snapshot shows how migration trends covering the last three decades look remarkably different across regions. Using Africa, Europe and Latin America and the Caribbean as examples, we can see massive variations in regional dynamics.

In Africa, we can clearly see that while there has been an increase in the number of Africans moving to other regions (reaching 19.5 million in 2020), most African international migrants remain within the region (21 million). Since 2000, intra-regional migration has sharply increased in Africa.

Figure 9. Migrants to, within and from Europe, 1990–2020



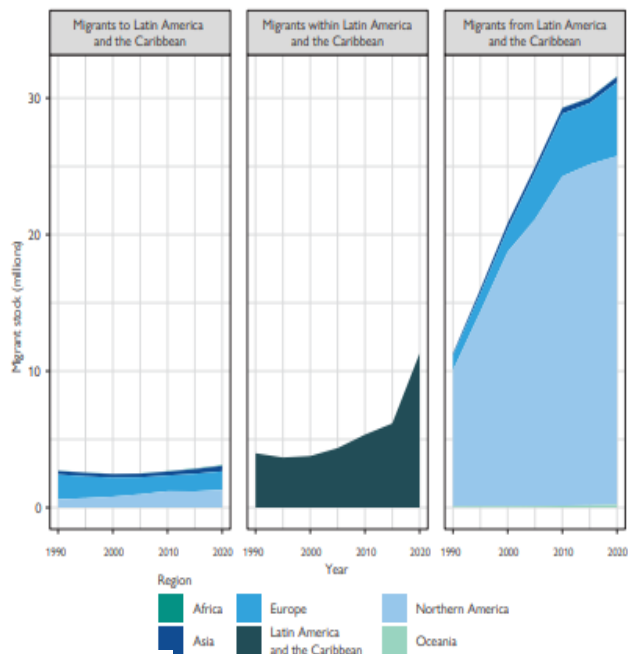
Source: UN DESA, 2021.

Unlike Africa, where the number of migrants from outside the continent is small, there has been a significant increase in the number of non-Europeans living in Europe. More than 40 million non-Europeans lived in Europe in 2020, rising from around 20 million in 1990. Europe also has a large number of intra-regional migrants (44 million), while the number of Europeans living outside of Europe has plateaued over the last three decades.

The data output for the Latin America and the Caribbean region looks completely different again, with the figure clearly showing that migration out the region to Northern America is the most defining feature of regional migration during the last 30 years.

Read more about these data outputs on long-term regional migration trends in Chapter 3 (regional trends) of the World Migration Report 2024. The full report can be accessed [here](#). The interactive data visualization platform is [here](#).

Figure 13. Migrants to, within and from Latin America and the Caribbean, 1990–2020



Source: UN DESA, 2021.